

Distal Radius Fixator

3723.000 Distal Radius Fixator



3724.000 Jig for Distal Radius Fixator



Tapered Pins



Codes	Size (mm)
3725-01	4 x 50L x 18TL
3725-02	4 x 60L x 20TL
3725-03	4 x 70L x 20TL
3725-04	4 x 80L x 20TL
3725-05	4 x 100L x 20TL

3728.000 Drill Sleeve 4 x 2.5mm



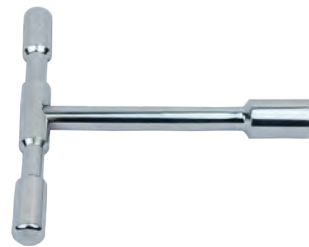
3730.000 Drill Bit 2.5mm



3731.000 Allen Key Universal A/F 3mm



3727.000 Half Pin Introducer 4mm



3726.000 Trocar



3729.000 Screw Guide 6 x 4mm



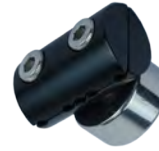
Dynamic External Fixator

Dynamic External Fixator



Codes	Type
3732-01	Small
3732-02	Medium
3732-03	Large

3733.000 T-End Clamp



3734.000 Self Adjusting Clamp with Medium Dynamic External Fixator



3735.000 Template for Large & Medium Dynamic External Fixator



3736.000 Template for Small Dynamic External Fixator, Code



3737.000 Elbow Clamp



3738.000 Spanner Universal Joint



3739.000 Half Pin Introducer D-Type



3741.000 Trocar



Screw Guide



Codes	Size
3740-01	8 x 6 x 60
3740-02	8 x 6 x 100

3742.000 Manipulating Forceps



Rail Fixation System

Rail



Codes	Length
3743.240	240mm
3743.300	300mm
3743.400	400mm

3744.000 Central Clamp



3745.000 End Clamp



3746.000 Swivel Clamp



3747.000 Ball & Socket Clamp Standard



3748.000 T-Ball & Socket Clamp



CD Unit



Codes	Length
3749.040	40mm
3749.080	80mm

3750.000 Graduated Swivel Clamp



3751.000 Dyna Ring Clamp



3752.000 T Clamp



3753.000 Sandwich Plate



3754.000 Bolt for Sandwich Plate



Pediatric Rail Fixation

Pediatric Rail



Codes	Length (mm)
3755.150	150
3755.200	200
3755.250	250

3756.000 CD Unit Pediatric



3757.000 Central Clamp Pediatric



3758.000 End Clamp Pediatric



3759.000 Swivel Clamp Pediatric



3760.000 Drill Guide 6 x 3.2 x 40mm



3761.000 Screw Guide 8 x 6 x 60mm



3762.000 Drill Bit 3.2 x 200mm



3763.000 Template for Pediatric End & Central Clamp



3764.000 Template for Pediatric Swivel Clamp



3765.000 Half Pin Introducer D-Type



3766.000 Allen Key 5mm



Tapered Threaded Pins

Length (mm)	Thread Length (mm)				
	20	30	40	50	60
Conical Shaft - 6mm / Tapered 6 to 5mm / Drill Bit 4.8mm					
130	x	3778-01	3778-03	3778-07	x
150	x	3778-02	3778-04	3778-08	x
170	x	x	3778-05	3778-09	3778-11
200	x	x	3778-06	3778-10	3778-12
Conical Shaft - 6mm / Tapered 4.5 to 3.5mm / Drill Bit 3.2mm					
100	3778-13	3778-14	x	x	x
120	x	3778-15	3778-16	x	x

Tapered Threaded Pins with Hydroxy Apetite Coating

Length (mm)	Thread Length (mm)				
	20	30	40	50	60
Conical Shaft - 6mm / Tapered 6 to 5mm / Drill Bit 4.8mm					
130	x	3779-01	3779-03	3779-07	x
150	x	3779-02	3779-04	3779-08	x
170	x	x	3779-05	3779-09	3779-11
200	x	x	3779-06	3779-10	3779-12
Conical Shaft - 6mm / Tapered 4.5 to 3.5mm / Drill Bit 3.2mm					
100	3779-13	3779-14	x	x	x
120	x	3779-15	3779-16	x	x

Wrist Fixator

3880.000 **Wrist Fixator**



3881.000 **Compression-Distraction Device**



3882.000 **Allen Wrench 4mm**



3883.000 **T Wrench**



Colles External Fixators

CF01.001 Colles Fixators

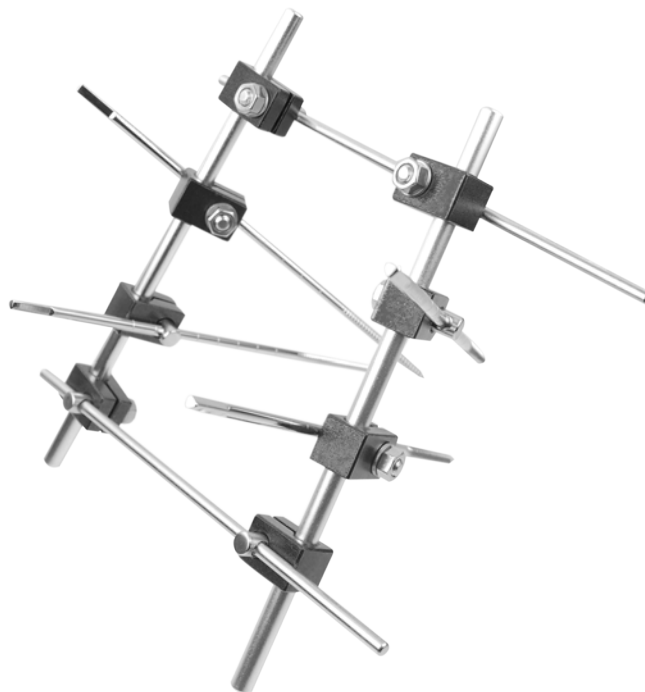


- Allen Key
- Spanner
- Schanz Pins



Linefix External Fixators

LF01.001 Linefix Fixators



- Allen Key
- Spanner
- Schanz Pins
- Rod
- Nut
- Washer
- Pin Holder